

PART OF N. 1/2 OF SEC. 18, T.6N., R.2E., S.L.B. & M.

HUNTSVILLE SURVEY

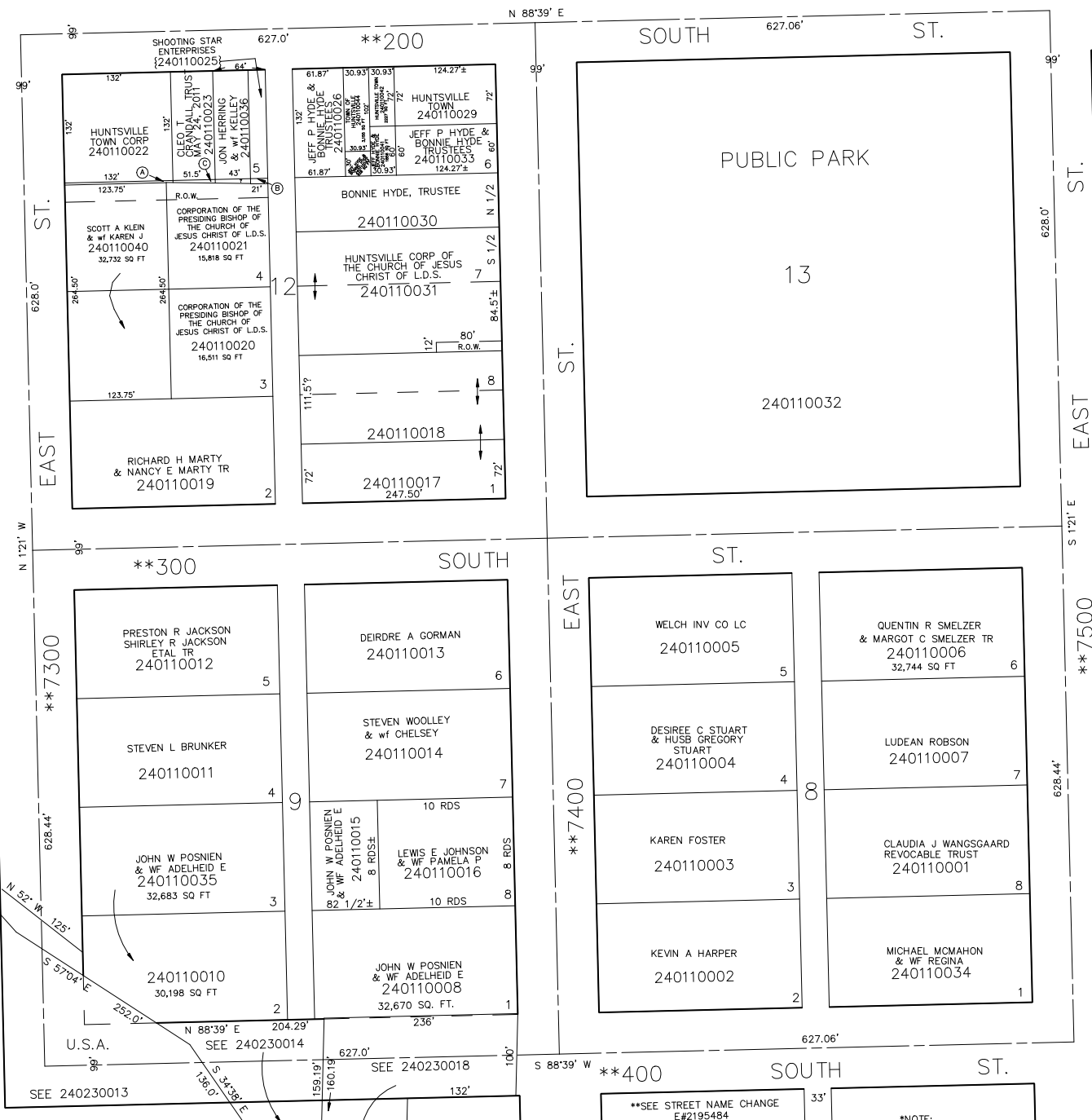
BLOCKS 8, 9, 12 & 13, PLAT A

TAXING UNIT: 35

SCALE 1" = 100'

SEE PAGE 14

- Ⓐ HUNTSVILLE TOWN CORP 240110037 248 SQ FT
- Ⓑ SHOOTING STAR ENTERPRISES 240110038 135 SQ FT
- Ⓒ CLEO T CRANDALL TRUST MAY 24, 2011 240110039 179 SQ FT



SEE PAGE 12

SEE PAGE 10

SEE PAGE 23

**SEE STREET NAME CHANGE E#2195484

*NOTE: STREET NUMBERS ACCORDING TO COUNTY SURVEYOR.